

sumius

SB Knife™

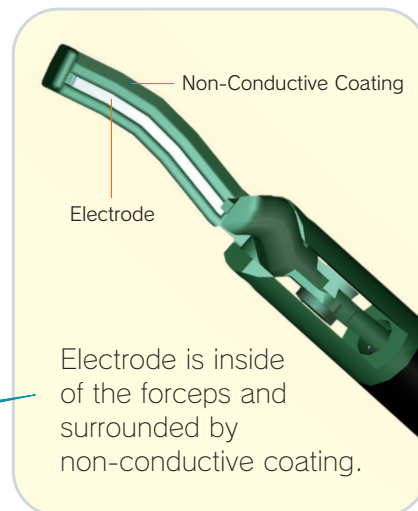
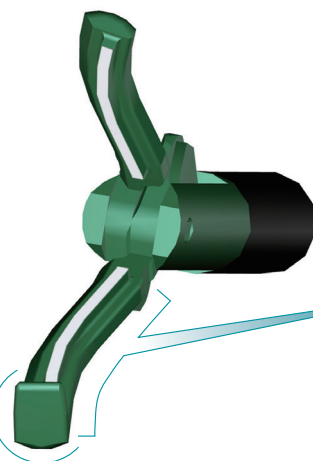
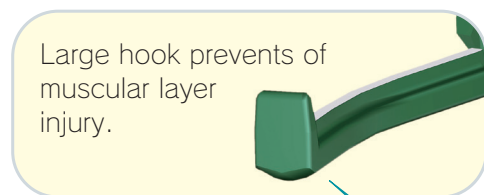
Monopolar ESD knife



New Concept Knife for ESD
Supporting Simpler,
Safer and More Effective ESD

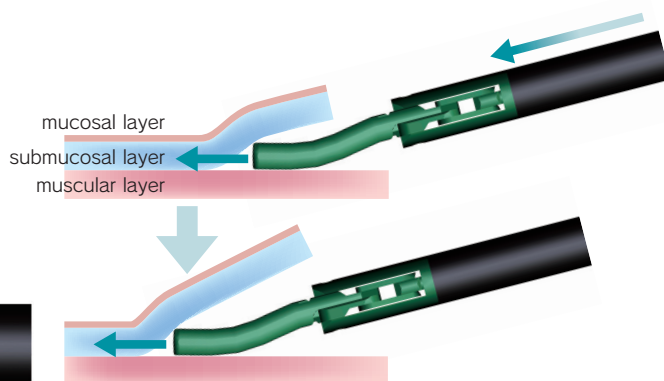
More Safe

Improvement of Safety with the Tip Profile and Electrode Positioning



Tip Profile

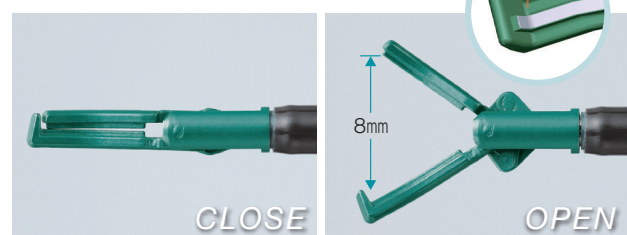
Curved tip allows to keep the proper dissecting layer and prevents unexpected muscular layer injury.



Device Variety

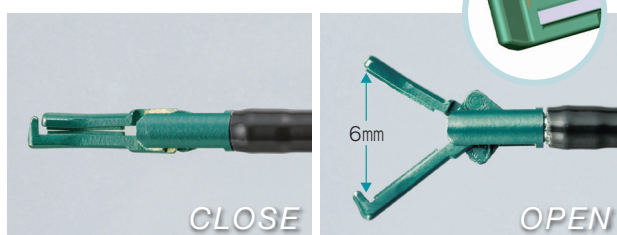
Short type and Standard type are available.

Standard type (for stomach)



Opening Width: 8mm Hook Electrode: +
Wider opening realize efficient dissection.

Short type (for esophagus and large bowel with narrow lumen)

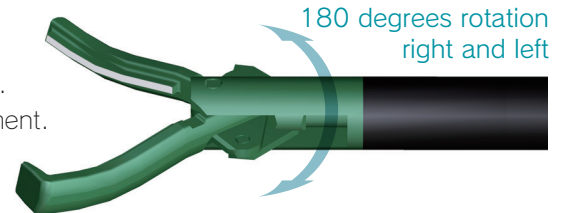


Opening Width: 6mm Hook Electrode: -
Short tip realize good handling in the narrow space.
Non electrode space at the tip is designed so that a muscular layer is easy to be released, even if a muscular layer is grasped unexpectedly.

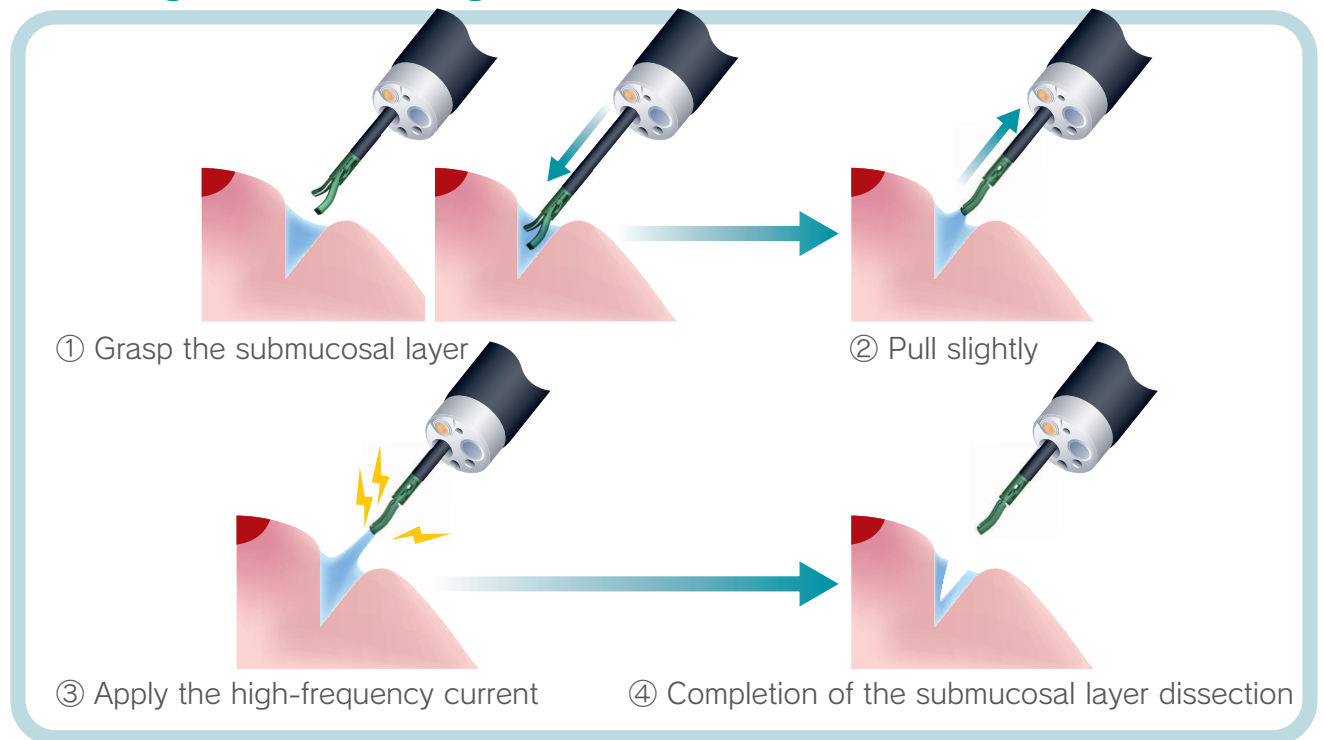
More Easy

Easier Dissection with Less Scope Control

- Provides comfortable dissection even in the retroflexed condition.
- Realize comfortable dissection even under the respiratory movement.
- Rotation mechanism provides easier operability.

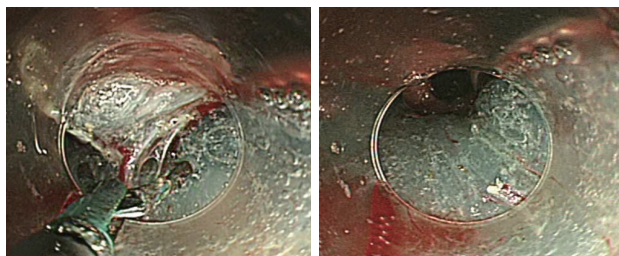


Dissecting Procedure Using SB Knife



More Effective

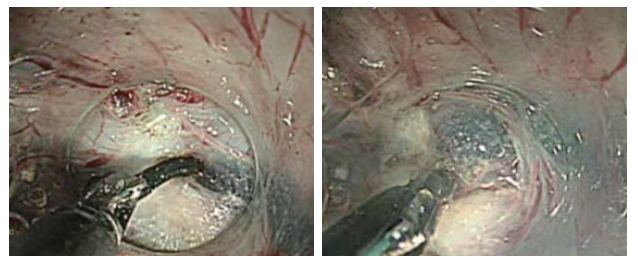
Cauterized dissection is possible without using other devices.



Cauterized Dissection

Since cauterization and cutting are performed by grasping and compression, clear vision is obtained during procedure without bleeding.

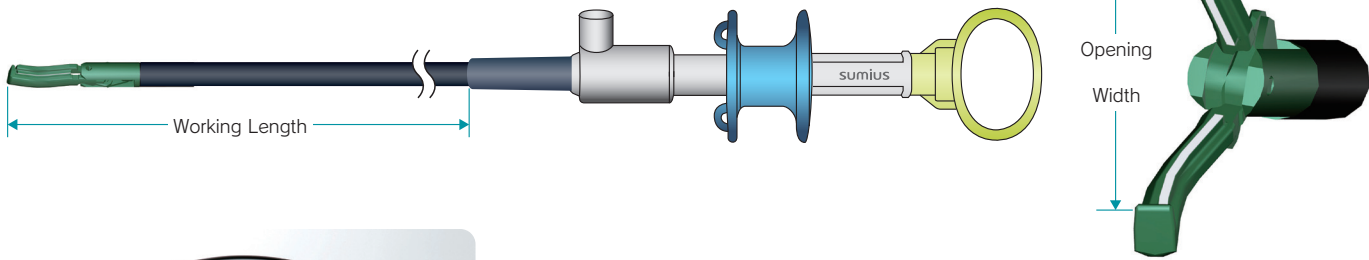
Fibrillated-tissue is also possible.



Dissection of the Fibrillated Tissue

Fibrillated tissue could be dissected with grasping cauterization.

Specifications



SB Knife Overall View

Model Number	Type	Knife Length (mm)	Opening Width (mm)	Working Length (m)	Minimal Channel Size (mm)	Electrode Inside Hook	High Frequency Current	Packaging
MD-47704	Short	6	6	1.8	2.8	-	Monopolar	1PC / Case
MD-47706	Standard	7	8			+		

Sterilized with Ethylene Oxide Gas

Caution

- Please do not use this product for purposes other than applicable intended use.
- This product must be used by or under the direct supervision of a doctor experienced in its use.
- Please read the attached document thoroughly before using this product.
- This product is disposable and intended for single-use. Do not re-use.
- Be sure to check the expiration date located on a sticker attached to the product.

- Please do not use the product after expiration date.
- Please do not use the product which has a damaged part in the package or a leak. Such product may be polluted.
- Store the product in a dry and cool place avoiding direct sunlight.
- If you have any question about this product, please contact our sales agency.

*Specifications are subject to change without notice to improve technical standard, appearance or others for the product.

 **SUMITOMO BAKELITE CO.,LTD.**

Medical Products Business Division

2-5-8, Higashi-Shinagawa, Shinagawa-ku, Tokyo, 140-0002, JAPAN

tel: 81-3-5462-4824 fax: 81-3-5462-4894

<http://www.sumibe.co.jp>