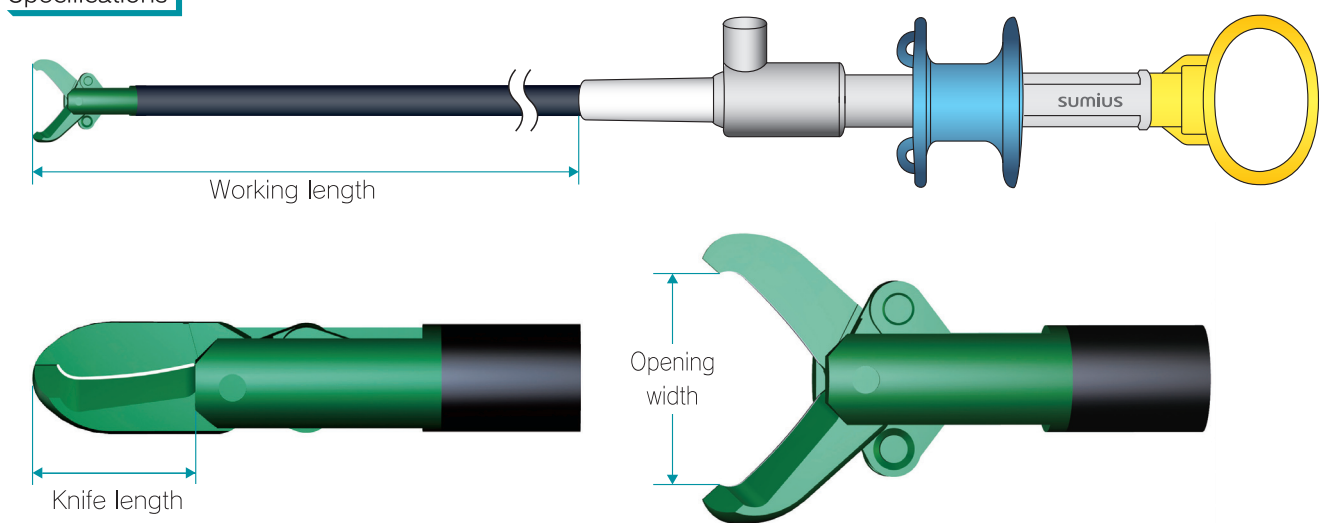


SB Knife Jr Type™ Monopolar ESD Knife

sumius

Specifications



Model Number	Type	Knife Length (mm)	Opening Width (mm)	Working Length (m)	Minimal Channel Size (mm)	High Frequency Current	Packaging
MD-47703	J r	3.5	4.4	1.95	2.8	Monopolar	1 / case


Sterilized with Ethylene Oxide Gas

Caution

- Please do not use this product for purposes other than applicable intended use.
- This product must be used by or under the direct supervision of a doctor experienced in its use.
- Please read the attached document thoroughly before using this product.
- This product is disposable and intended for single-use. Do not re-use.
- Be sure to check the expiration date located on a sticker attached to the product.

- Please do not use the product after expiration date.
- Please do not use the product which has a damaged part in the package or a leak. Such product may be polluted.
- Store the product in a dry and cool place avoiding direct sunlight.
- If you have any question about this product, please contact our sales agency.

*Specifications are subject to change without notice to improve technical standard, appearance or others for the product.

 **SUMITOMO BAKELITE CO.,LTD.**
Medical Products Business Division
2-5-8, Higashi-Shinagawa, Shinagawa-ku, Tokyo, 140-0002, JAPAN
tel: 81-3-5462-4824 fax: 81-3-5462-4894
<http://www.sumibe.co.jp>

Not FDA approved

2012.11.1000 L:AD477:12K01

sumius

SB Knife Jr Type™

Monopolar ESD knife

Innovation in Colorectal ESD!



New Concept Knife for ESD
Supporting Simpler,
Safer and More Effective ESD

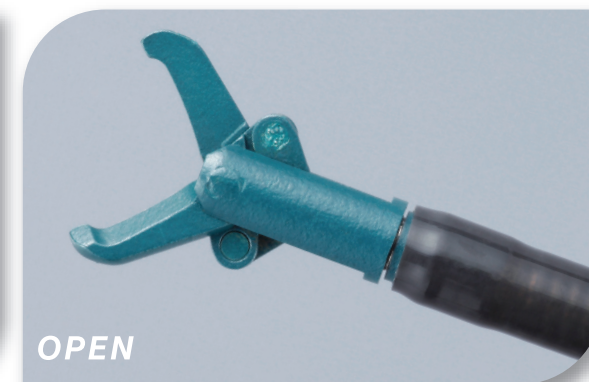
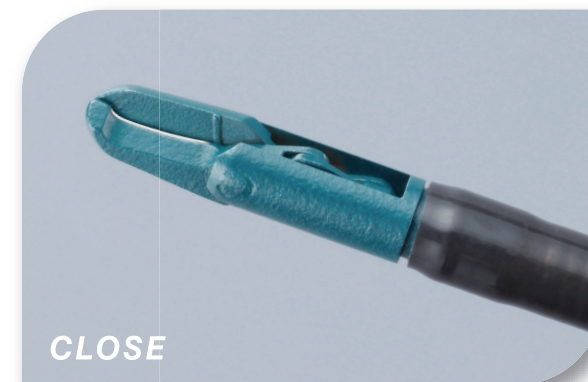
 **SUMITOMO BAKELITE CO.,LTD.**

Mucosal
incision

Submucosal
dissection

Hemostasis

Supports colorectal ESD from mucosal incision to submucosal dissection and hemostasis.



Features

● Enables mucosal incision, submucosal dissection and hemostasis.

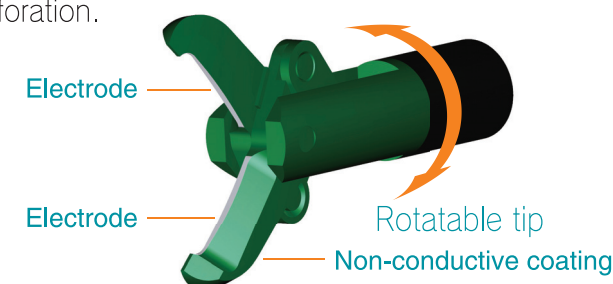
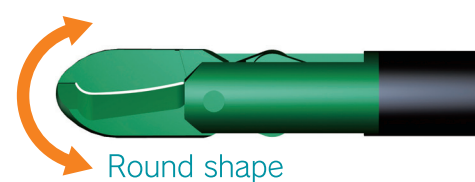
- Shearing mechanism and fine electrodes enable a sharp and efficient incision.
- SB Knife can also be used as a hemostatic forceps.

● Allows treatment in winding and narrow lumens.

Optimized opening width and knife length allow delicate treatment in curved and narrow lumens such as lower GI tract.

● Safe design.

- The electrodes are located inside the blades and the outer surface is covered by non-conductive coating.
- Round shape tip prevents unexpected perforation.

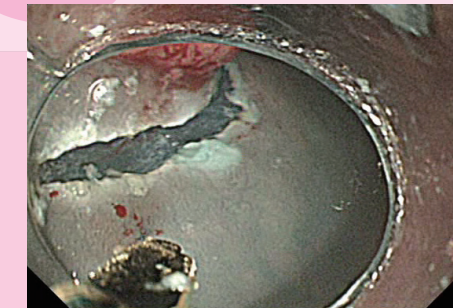


● Superior rotation ability.

Superior rotation ability enables the ideal positioning of blades.

Clinical case

Mucosal incision



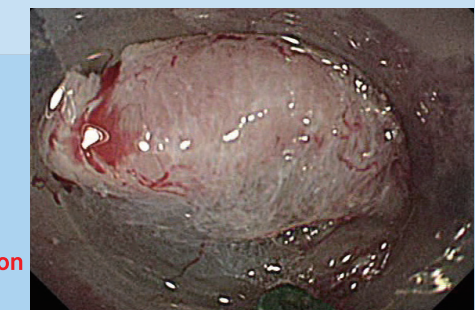
Shearing mechanism and fine electrodes enable a sharp and efficient incision.

Submucosal dissection

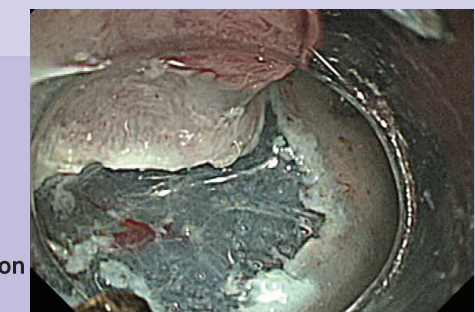
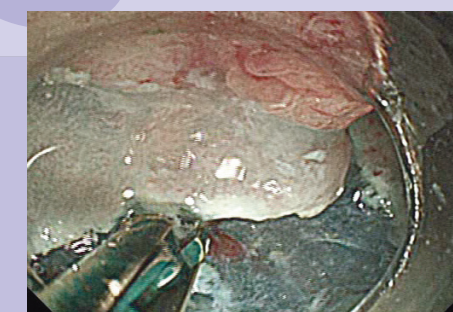


Allows safe and efficient dissection without swinging the endoscope.

Dissection of fibrous tissues ⇒ Thin blades can penetrate fibrous tissues.



Blood vessel sealing ⇒ Grasping dissection is more effective in the prevention of bleeding.



Hemostasis ⇒ Usable as a hemostatic forceps.

