



Carbon Reduction Plan BVM Medical LTD

Publication date 15/11/2025

Commitment to achieving Net Zero by 2040 for Direct emission and 2045 for all emissions.

This Carbon Reduction Commitment and Plan is available on our website

www.bvmmedical.com



Baseline Emissions Footprint

Baseline emissions are a record of the greenhouse gases that have been produced in the past and were produced prior to the introduction of any strategies to reduce emissions. Baseline emissions serve as the reference point against which emissions reduction can be measured. However, since this is our first year of calculation, our baseline and current year emissions are identical.

Baseline Year: 2023

Additional Details relating to the Baseline Emissions calculations.

The company has discovered significant errors in the baseline data for the year 2019. Due to these errors, the company has decided to reassess the baseline year and establish 2023 as the new baseline. This change is intended to ensure consistency and accuracy in future studies.

Baseline year emissions:

EMISSIONS	TOTAL (tCO ₂ e)	
Scope 1	19.65	
Scope 2	Location Base: 5.17	Market Base: 0
Scope 3 (Included Sources)	84.58	
	Purchased goods and services	44.13
	Fuel- and energy-related activities	6.09
	Upstream transportation and distribution	25.06
	Waste generated in operations	0.11
	Business travel	5.57
	Employee commuting	3.04
	Downstream transportation and distribution	0.57
Total Emissions		104.23 Market Base 109.4 Location Base

Current Emissions Reporting

Current Year: 2024

Additional Details relating to the Current Emissions calculations.

Current Year Emissions

EMISSIONS

TOTAL (tCO₂e)

Scope 1

9.41

Scope 2

Location Base: 2.55

Market Base: 0

Scope 3

(Included Sources)

83.3

Purchased goods and services

38.37

Fuel- and energy-related activities

1.87

Upstream transportation and distribution

29.60

Waste generated in operations

0.03

Business travel

6.37

Employee commuting

2.77

Downstream transportation and distribution

4.28

Total Emissions

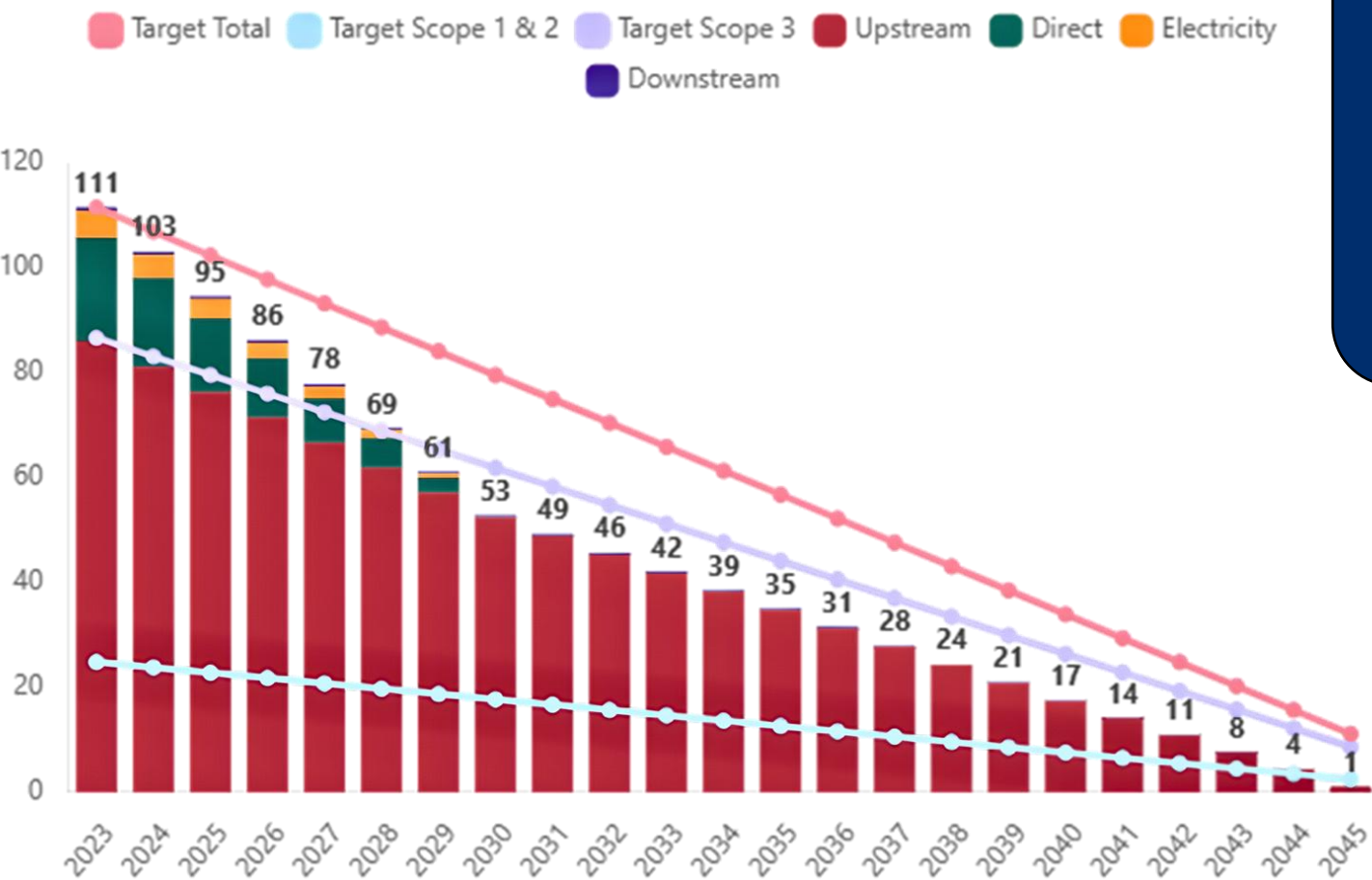
92.71 Market Base

95.26 Location Base



Emissions reduction targets

To achieve Net Zero, and in line with the Science Based Targets initiative SBTi, we have adopted the following carbon reduction targets:



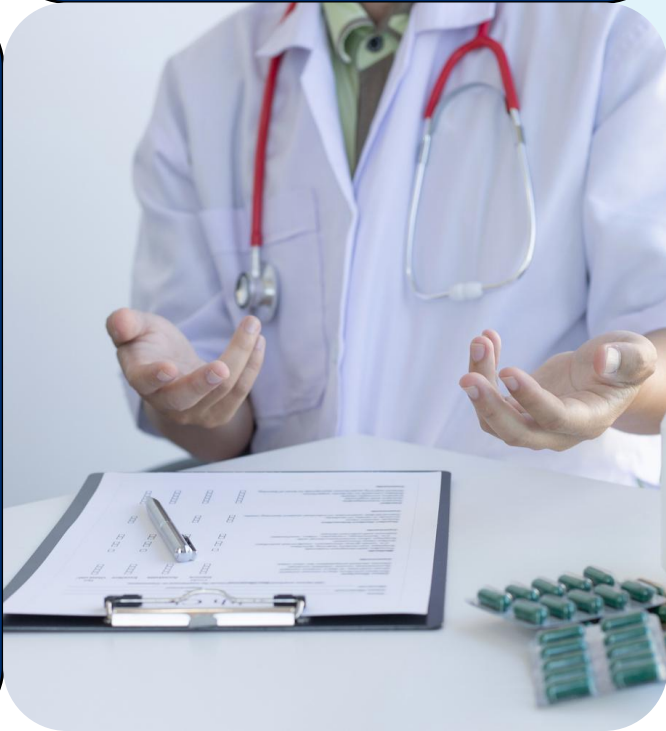
From the chart, we can see that BVM is ahead of its target of 103 tCO₂e, having successfully reduced its emissions to 92.71 tCO₂e in 2024. This represents a positive achievement, demonstrating continued progress toward the company's carbon reduction goals.

We are committing to reduce our Scope 1 emissions by at least 45% by 2030 and 100% by 2040.



We are committing to reduce our Scope 2 emissions by at least 45% by 2030 and 100% by 2040.

We are committing to reduce our Scope 3 emissions by at least 30% by 2030 and 100% by 2045.



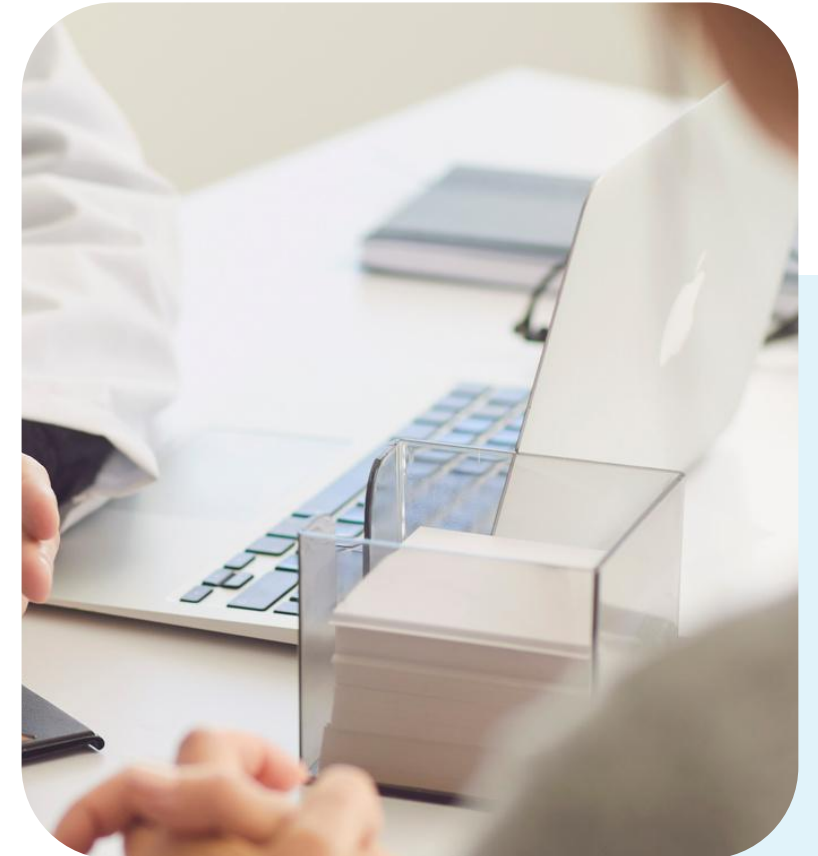
Carbon Reduction Projects

Completed Carbon Reduction Initiatives

BVM Medical have completed the following environmental management measures and projects since the 2019 and the measures will be in effect when performing the contract.

1. Replacement of fifteen Petrol/Diesel vehicles with Hybrid/EV's.
2. Installation of Loft insulation at our head office premises.
3. Implementation of ISO14001:2015 Environmental Management System.
4. Replacement of Gas Boiler and installation of new heating controls.
5. Replacement of Fluorescent Tube lighting with LEDs throughout our offices.

We are committed to monitoring our carbon emissions and conducting annual carbon footprint calculations covering all three scopes. This commitment will be effective throughout the duration of the contract.



To meet our targets, we are planning to implement the below measures:



1. Replace the rest of Petrol/Diesel vehicles with EVs by 2032.
2. Switch to an electric boiler powered by solar or a heat pump by 2032.
3. Install solar panels gradually from 2024 to cover all our use by 2032.
4. Reduce our emissions from purchased goods and services by 5% every year by working with the existing suppliers or switching to new suppliers.
5. Utilize more eco-friendly routes in upstream transportation to reduce our transportation emissions by 5% annually.
6. Electrify downstream transportation to reduce our emission by 5% annually.
7. Encourage employees to consider alternative commuting options and in the next 5 years offer them schemes such as:
 - Cycle-to-work.
 - EV salary sacrifice schemes.

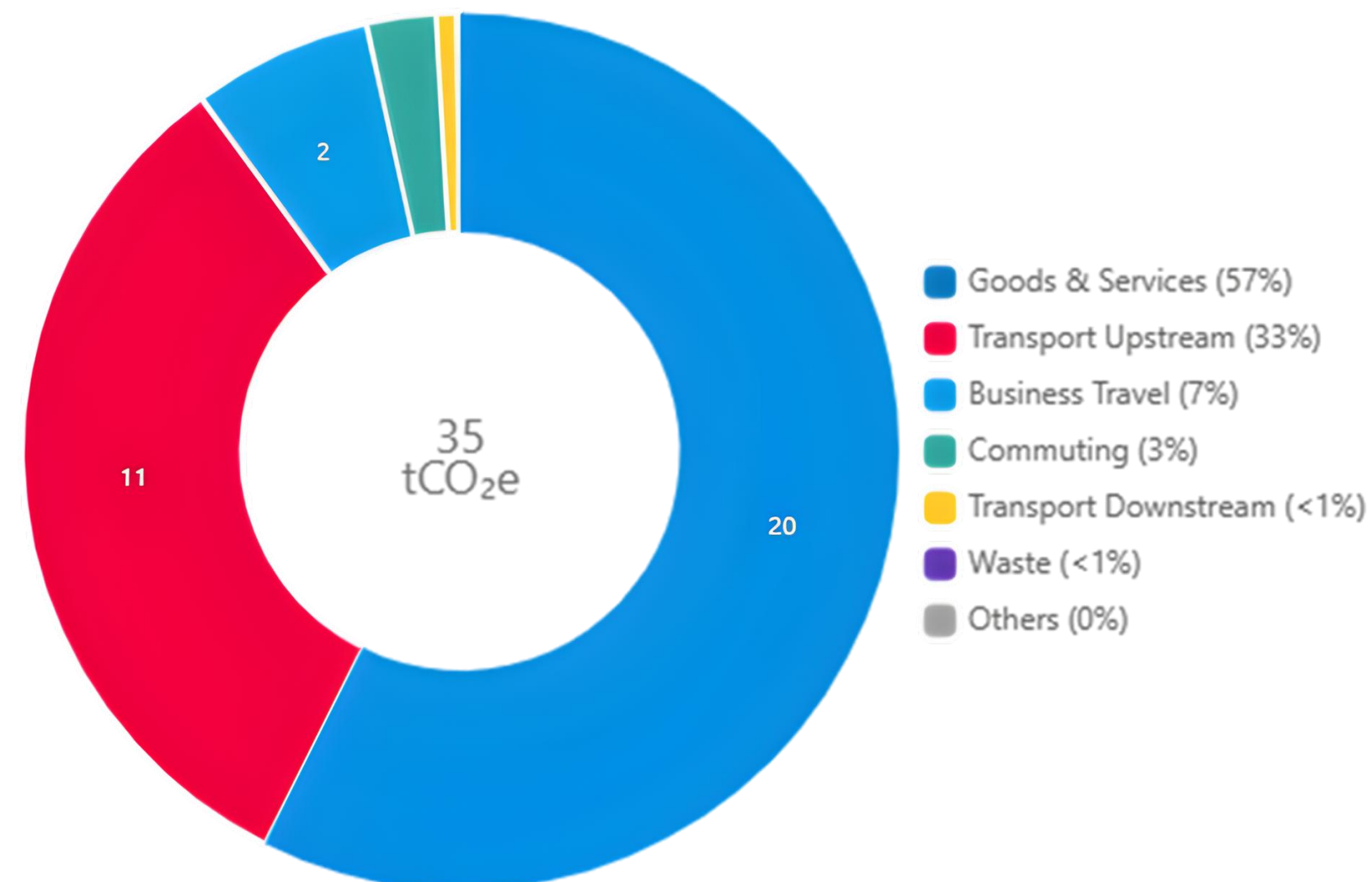
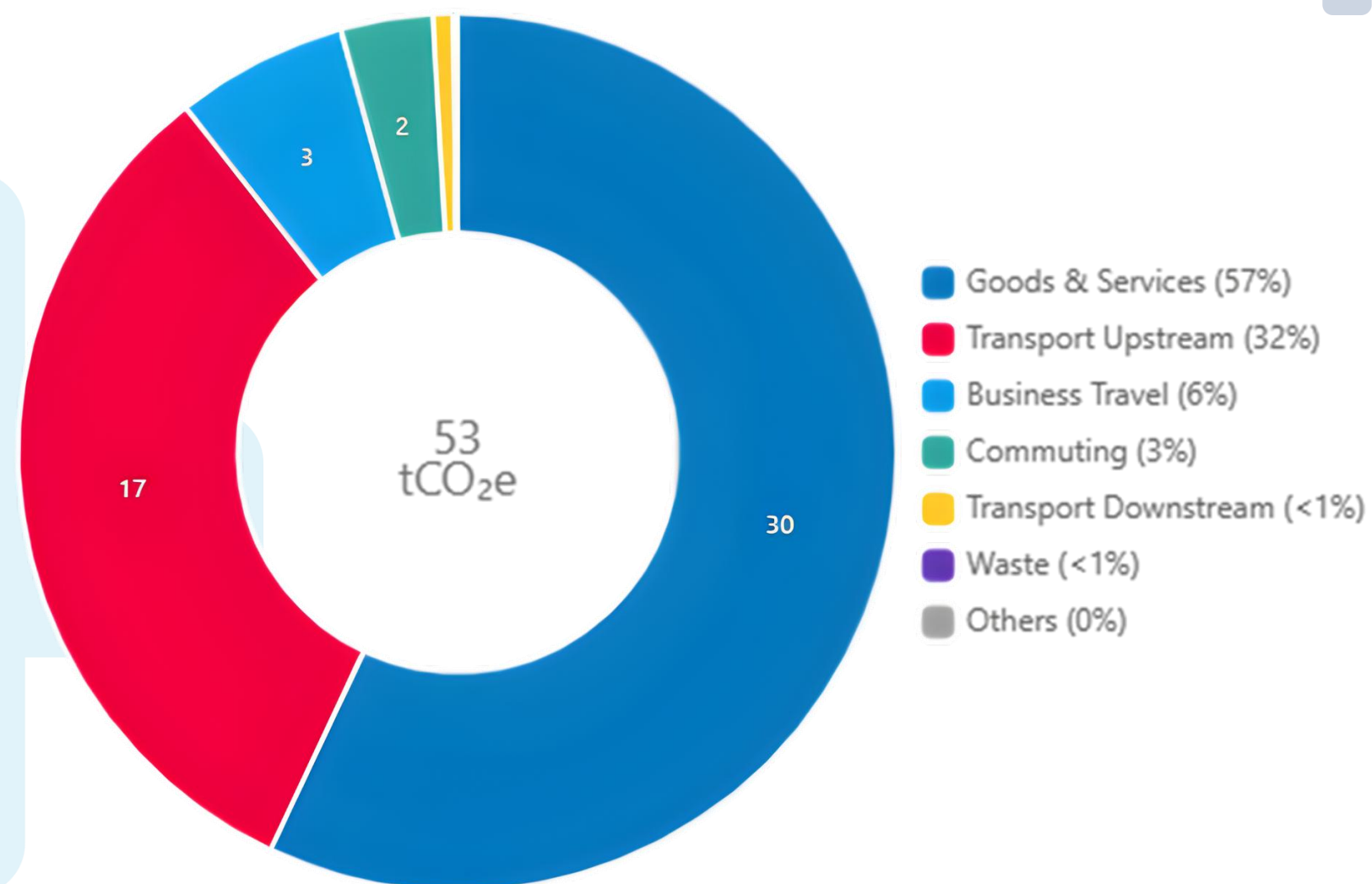


8. Reduce our waste by 80% by 2040.
9. Reduce business travel emissions by 5% yearly. Achieving this by decreasing the number of intercontinental flights and decreasing the associated emissions through choosing more eco-friendly routes.

We project that carbon emissions will decrease
2030 to 53 tCO₂e This is a reduction of 50%



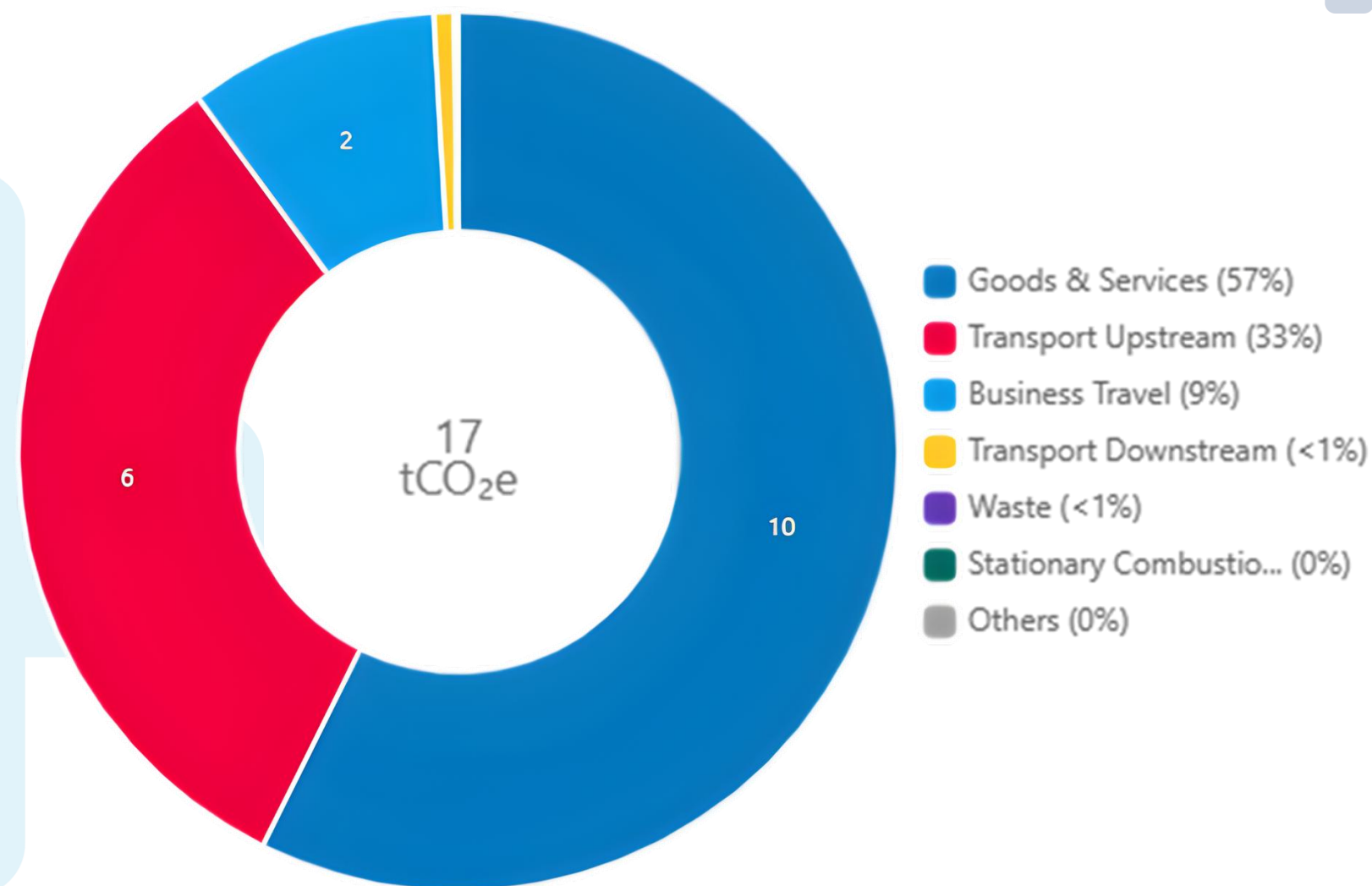
We project that carbon emissions will decrease
2035 to 35 tCO₂e This is a reduction of 67%



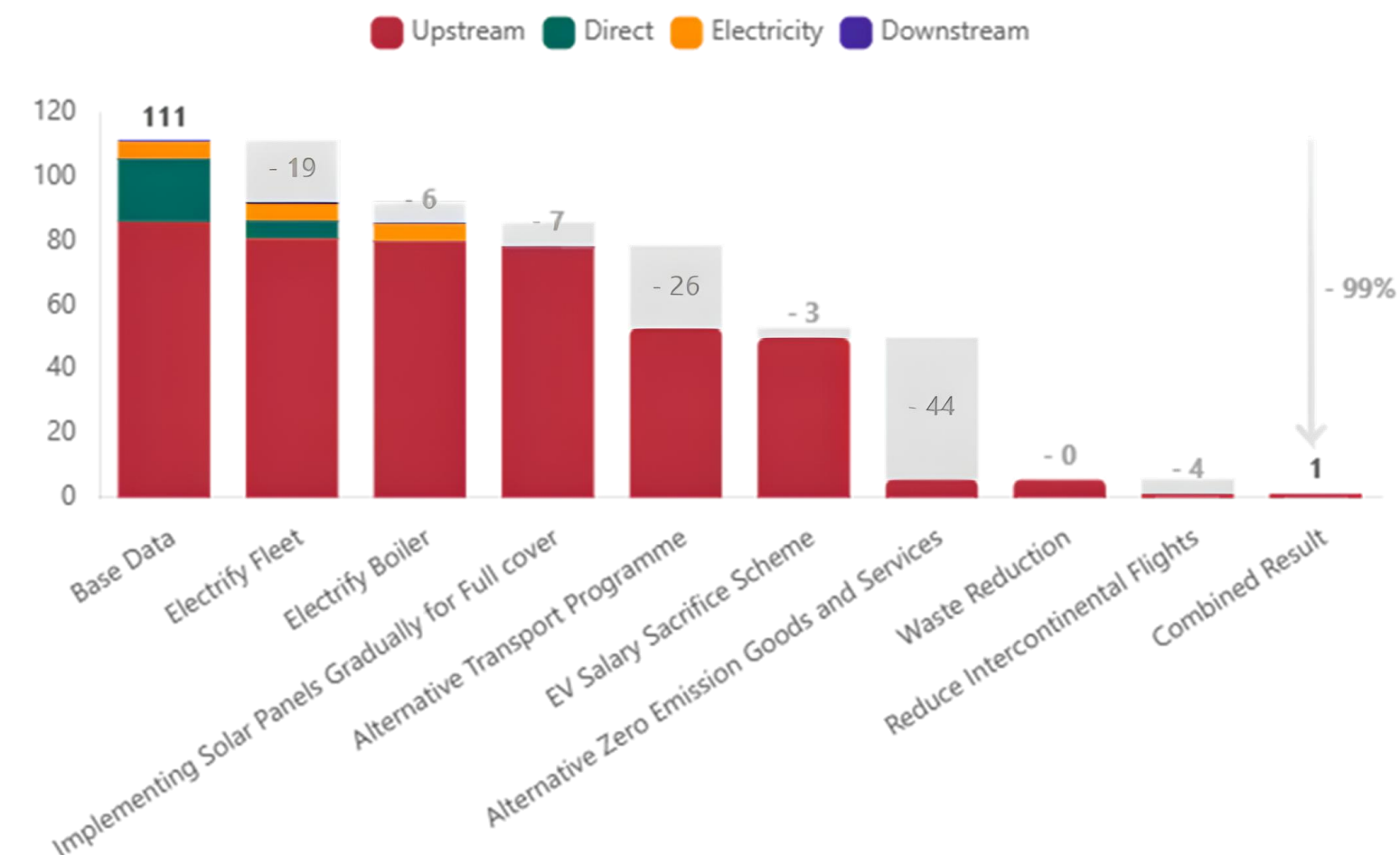
We project that carbon emissions will decrease
2040 to 17 tCO₂e This is a reduction of 84%



**This is the impact each of the
measures will have on our emissions:**



We project that carbon emissions will decrease
2045 to 1 tCO₂e This is a reduction of 99%





Declaration and Sign Off

This Carbon Reduction Plan has been completed in accordance with PPN 06/21 and associated guidance and reporting standard for Carbon Reduction Plans.

Emissions have been reported and recorded in accordance with the published reporting standard for Carbon Reduction Plans and the GHG Reporting Protocol corporate standard[1]and uses the appropriate Government emission conversion factors for greenhouse gas company reporting[2].

Scope 1 and Scope 2 emissions have been reported in accordance with SECR requirements, and the required subset of Scope 3 emissions have been reported in accordance with the published reporting standard for Carbon Reduction Plans and the Corporate Value Chain (Scope 3) Standard[3].

This Carbon Reduction Plan has been reviewed and signed off by the board of directors (or equivalent management body).

Signed on behalf of the Supplier:

Nick Elton

Date: 15/11/2025



[1] <https://ghgprotocol.org/corporate-standard>

[2] <https://www.gov.uk/government/collections/government-conversion-factors-for-company-reporting>

[3] <https://ghgprotocol.org/standards/scope-3-standard>