

“Better Half” for the SB Knife™

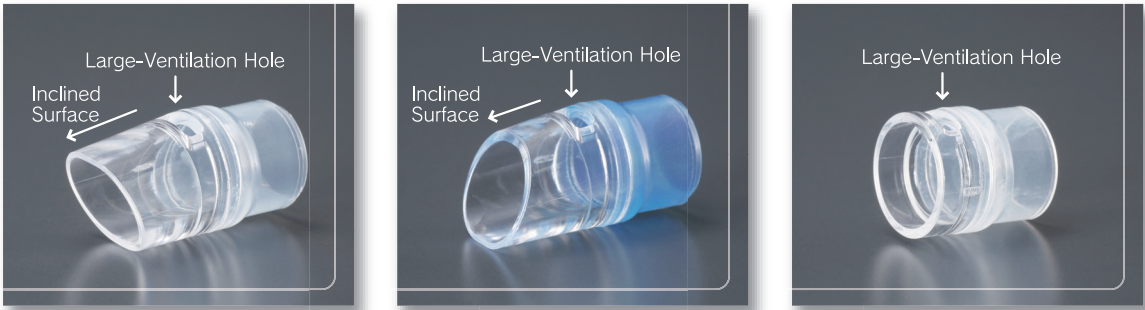
Enhance the function of the SB Knife
-Short, Top Projection type(TP), Bottom Projection type(BP)-

► Unique opening shape allows easy operation of the SB Knife.



Features

- Large-ventilation hole helps SB Hood stay clean and keeps clear vision.
- Inclined surface provides easier slip-in to the submucosal layer.

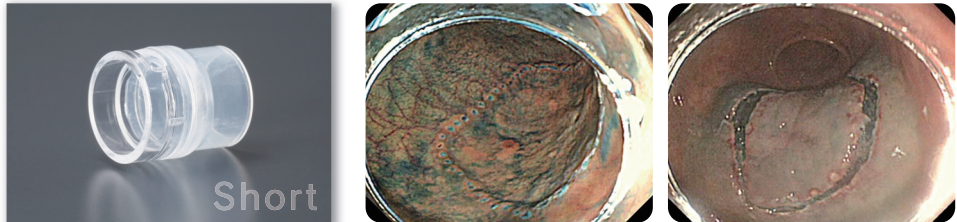


Three lineups

Three Types of the SB Hood are Designed to Assist Each Step of ESD

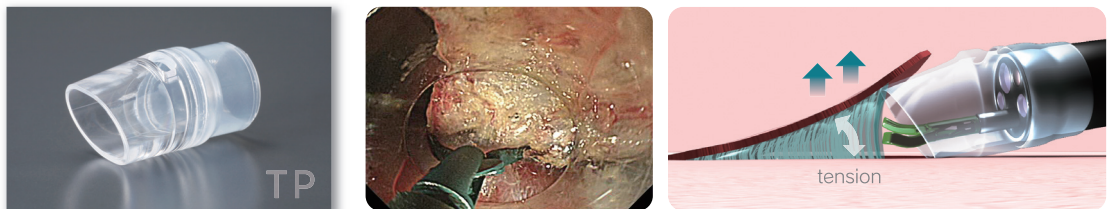
► Short type

Short type SB Hood provides wider visual field and secure procedures.



► Top Projection type (TP)

In the case that the target area is located in the lower side of the endoscopic view, Inclined Surface and 12mm projection length allow the hood to slip-in to the mucosal layer and to push the mucosal layer upward side. The hood gives the dissection area upward tension.



► Bottom Projection type (BP)

In the case that the target area is located in the upper side of the endoscopic view, Inclined Surface and 12mm projection length allow the hood to slip-in to the mucosal layer and to push the mucosal layer downward side. The hood gives the dissection area downward tension.



How to Choose

Please choose the best types of the SB Hood for each ESD step referring to the chart on the right.

Treatment step	Function	Selection of SB Hoods	
		Target area is located in the lower side of the endoscopic view	Target area is located in the upper side of the endoscopic view
marking: mucosal dissection: trimming	Provides wide view	Short	
the beginning of dissection~ slips into submucosal layer	Press the mucosa towards the muscle layer and locates treatmet area in the center of the endoscopic view.	BP	TP
slips into submucosal layer ~final	Provides tension for secure dissection	TP	BP