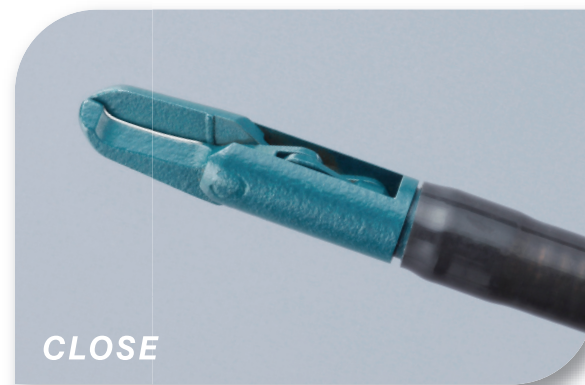


Mucosal
incision

Submucosal
dissection

Hemostasis

Supports colorectal ESD from mucosal incision to submucosal dissection and hemostasis.



Features

● Enables mucosal incision, submucosal dissection and hemostasis.

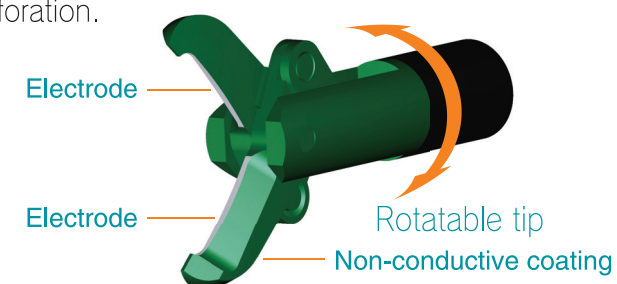
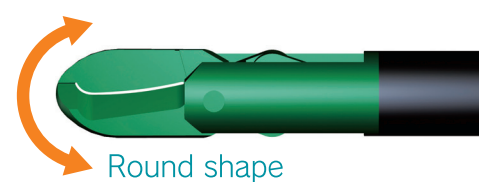
- Shearing mechanism and fine electrodes enable a sharp and efficient incision.
- SB Knife can also be used as a hemostatic forceps.

● Allows treatment in winding and narrow lumens.

Optimized opening width and knife length allow delicate treatment in curved and narrow lumens such as lower GI tract.

● Safe design.

- The electrodes are located inside the blades and the outer surface is covered by non-conductive coating.
- Round shape tip prevents unexpected perforation.

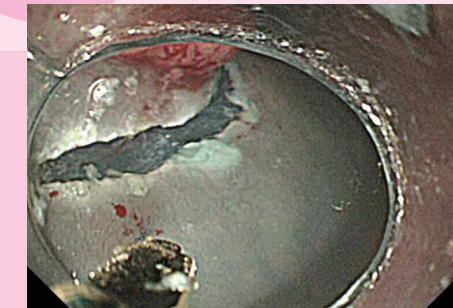


● Superior rotation ability.

Superior rotation ability enables the ideal positioning of blades.

Clinical case

Mucosal incision



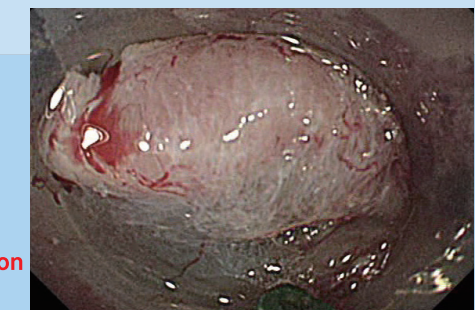
Shearing mechanism and fine electrodes enable a sharp and efficient incision.

Submucosal dissection

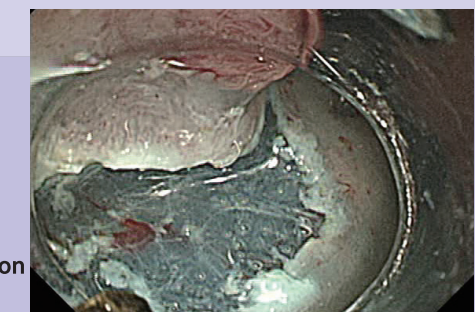


Allows safe and efficient dissection without swinging the endoscope.

Dissection of fibrous tissues ⇒ Thin blades can penetrate fibrous tissues.



Blood vessel sealing ⇒ Grasping dissection is more effective in the prevention of bleeding.



Hemostasis ⇒ Usable as a hemostatic forceps.

